



The Fairer Fittie Fair

Fittie Community Hall, New Pier Road, AB11 5DR

Saturday 18 February – 10:00 to 16:00

Visual Guide

About the Event

Join us to shop all things local and upcycled at **The Fairer Fittie Fair**.



Support local sustainable businesses who make a difference through their ethical or environmental approaches. Browse locally produced foods and find unique upcycled arts and crafts. Or just pop along for a cuppa and to enjoy live acoustic music and environmentally friendly vibes.

Where and how to find the venue?

The address of the venue is: Fittie Community Hall, New Pier Road, AB11 5DR

See the '**How to Find Us**' section for directions to the hall and transport info.

If you use **what3words**, the Fittie Community Hall is: **skill.straw.finger**

You might find it easiest to download the what3words **app**

You can arrive at anytime between 10am and 4pm and you can stay for as long or as short a time as you want.

If you arrive before 10am you can wait outside or in the garden. We might be able to let you in to the hall early if we are ready.

If you are in the hall at 4pm you can keep looking at the stalls until you are finished, but we will stop letting new visitors into the hall at 4pm.

Arriving at the Hall

When you arrive, you'll know you're at the right place because the gate has a sign which says **Fittie Community Hall**.



The front door will be open and we'll have decorations outside the building to help everyone find it.





The hall is wheelchair accessible. Once you come through the gate, you'll find a ramp which everyone will use to access the front door.

Inside the Hall

Through the front door, is the lobby. This is where the toilets are located.

Straight ahead is the main hall where all the stalls are. The doors to the main hall have windows, so you can see inside before you enter the hall.

At some points in the day, a musician will be playing his guitar and singing. He'll play music for around 30 minutes at a time and have a rest for around 30 minutes in between his performances.

There are lots of interesting stalls to look at. You can speak to the stall holders if you want. Most items have a price displayed on them, but if you are unsure about the price of an item you can ask the stall holder. They will be able to tell you more about the items they are selling.

You can choose to buy some food or drink if you want, or you can get your face painted with glitter face paints.

There are round tables and chairs where you can sit to have a rest, if you want to look at the items you have bought or if you want to eat or drink.



Image by Geraldine Heaney

This is a photo from a previous event - you can see the size of the hall, and the layout with windows on both sides, the round tables for relaxing and larger tables where we'll have the stalls.

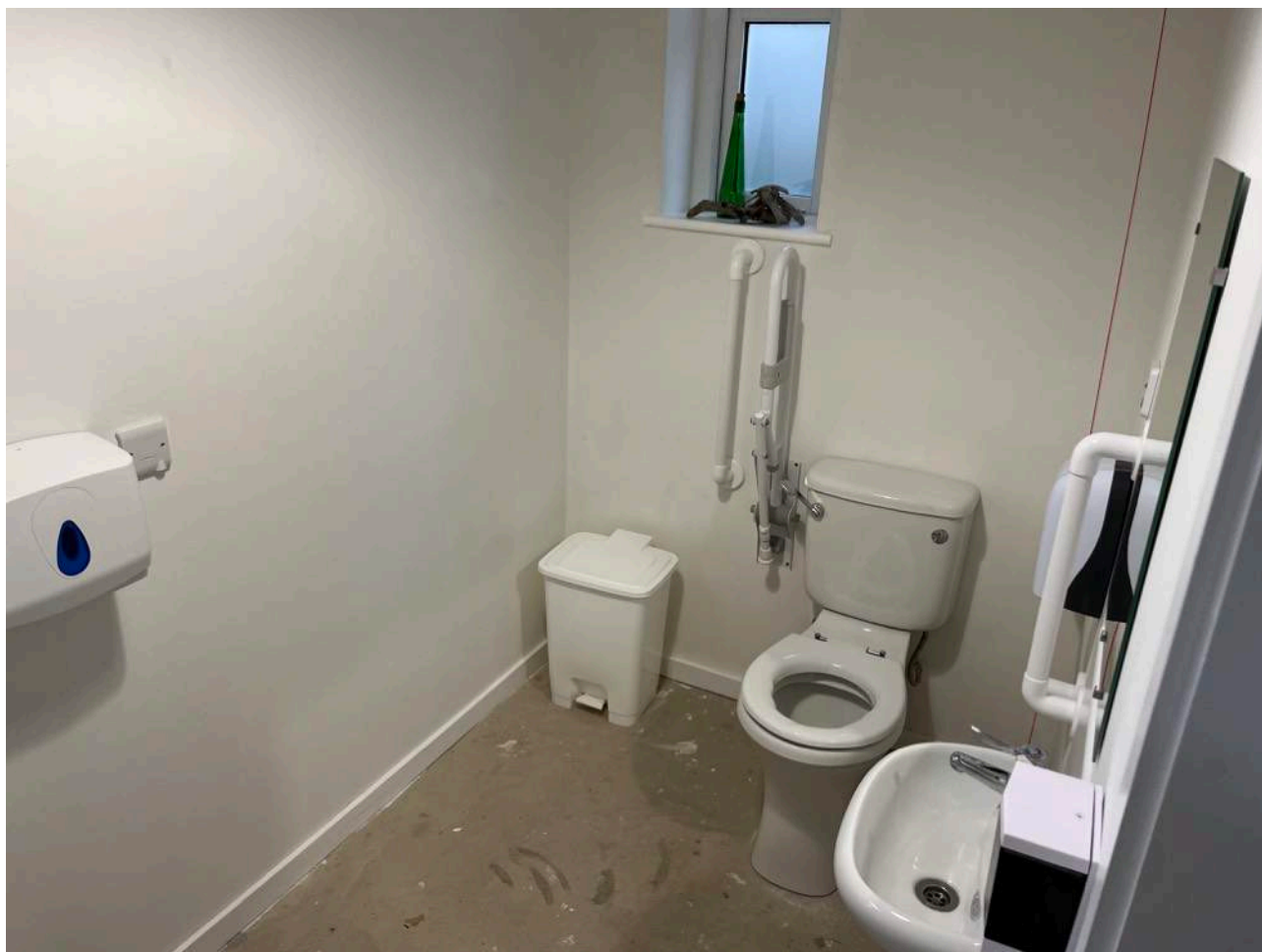
Outside in the Garden



The outdoor space at the Fittie Community Hall can be accessed from the front of the building, through the wooden gate on the right-hand side. The pathway down is wheelchair accessible, however it is a little windy and powered mobility aids may struggle.

There are no stalls outside and the music will sound softer away from the hall. This can be a good place to rest or enjoy some peace if you need a break from the fair.

Toilet Facilities



The hall has an accessible toilet off the main lobby which has plenty of room for a wheelchair. The accessible toilet is fitted with grab rails around the toilet for anyone who needs them. This toilet also has a baby changing station in it and is fitted with an emergency alarm which you can pull if you need help. It is a private single cubicle, so it can only be used by one person (plus their carer) at a time.

There is second toilet off the lobby which you can also use if you wish. It is smaller than the accessible toilet, so can only accommodate one person at a time. This cubicle is not designed to accommodate a wheelchair.

The toilets both have painted signs on the outside of the door to help you find them, and you can lock the toilet doors from the inside for privacy.

There are paper towels in the toilets to dry your hands.

Other Considerations

The hall is quite small, so it might get noisy as shoppers arrive. There will also be some live music at points during the day, so you might want to use **ear defenders** if there are auditory considerations.

The hall may also be busy. You're welcome to leave the hall and come back as many times as you wish. You are also welcome to use the community garden where it will be less crowded and the music and other noises will sound softer.

There is an accessible toilet with baby changing facility. This is not a fully-equipped changing space.

Parking next to the venue can be challenging. If mobility is an issue, we would suggest that you drop off at the door and drive on to a parking space. See the '**How to Find Us**' section for some nearby locations to park.

Please be aware that there is another Hall in Fittie – the Footdee Mission Hall in North Square – not to be confused with the Fittie Community Hall on New Pier Road.

How to Find Us

By Bike

The nearest bike parking is on the Esplanade next to the public toilets, a few minutes walk from the Community Hall. To get the Fittie Community Hall from the bike racks, walk towards York Street and take a left down New Pier Road. The Hall is around half the way down the road on the right hand side.

By Bus

On Saturdays the number 15 bus travels between the city centre and the Beach Retail Park roughly every half hour from 07:40 onwards. The last bus to return to the centre from the Beach Retail Park is at 19.16.

There is a limited bus service to Fittie, served by the number 13 bus which stops at the end of New Pier Road/York Street.

By Car

Parking in and around Fittie is limited and primarily used by Fittie residents.

It is worth checking York Street for available spaces. Depending how far up York Street you park, it is a 5 – 7 minute walk to reach the hall. To reach the hall from York Street, walk South up York Street until you reach the Esplanade. Cross over the Esplanade onto New Pier Road and continue until you reach the hall which will be on your right (around halfway down the road).

If you need to park closer to the hall for accessibility reasons, it is worth looking for spaces on Pocrá Quay (the road on which meets the Esplanade, York Street, and New Pier Road). From here it takes two minutes to walk to the hall.

To reach the hall from Pocrá Quay, follow the road back around to the Esplanade and turn right down New Pier Road. Alternatively, follow the road in the opposite direction to the bottom of New Pier Road. Turn left up New Pier Road and the hall will be on your left halfway up the road.

**Visual guide compiled by Martin Aitken
January 2023**